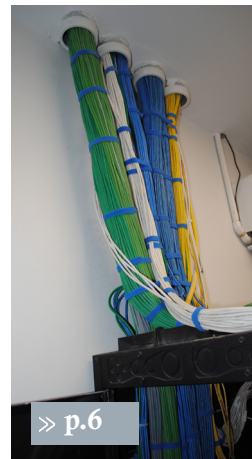


Selecting a Structured Cabling Integrator:

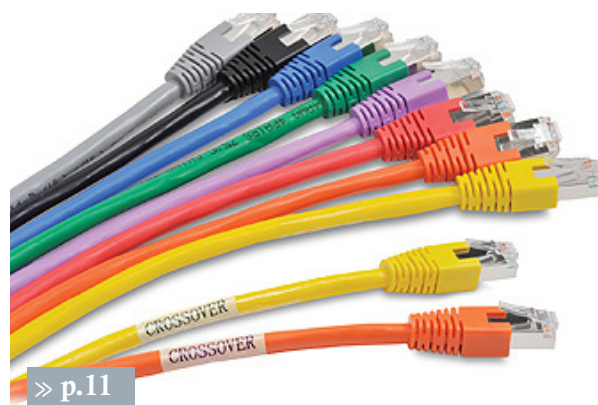
Peace of Mind VS Cabling Disaster



Table of Contents



- 1 OVERVIEW
- 2 SELECTING AN INTEGRATOR
- 3
- 4 THE IMPORTANCE OF QUALITY PROJECT MANAGERS
- 5 CONCLUSION



About the Author. Maximilian Mansfield is the Marketing Manager at American Integrated Security Group.



Overview

A comprehensive guide to proper structured cabling techniques and the criteria needed to select and integrator .We've seen it all too many times, a tangled cable mess that makes locating a single cord a needle in a haystack ordeal. Proper cabling practices can be the difference between peace of mind and frustrating, expensive disaster.

Selecting an Integrator

An integrator must be both experienced and dedicated solely to this type of work. Extensive experience is what allows distinct awareness of the minor nuances in structured cabling. Aspects like labeling each cable or using cable hooks/mounts during installation so that finding a cable associated to a given camera is a breeze and not a tangled mess.

BICSI structured cabling standards are but a guideline, and simply just adhering to them often won't suffice. Things like documentation in all phases can be critical; blueprints with cable ID, comprehensive spreadsheets with cable ID's/patch port numbers, and test results for each. Again it's the little

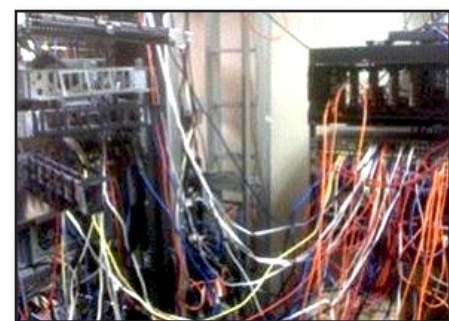
things that tend to make the biggest differences in the long run. For example jacketing cables by color to indicate which system it belongs to often doesn't take much additional effort for the integrator, but it can make all the difference for the end user when identifying a problem.

The third vital component is communication with the customer to ensure peace of mind. From planning the job, to breaking down and scheduling the different job phases, a

structured cabling crew is constantly in contact with the client to assure everyone is on the same page. A warranty on both the product and the labor shows the confidence in the attention to detail throughout the project.

Front to back operations including service offerings like:

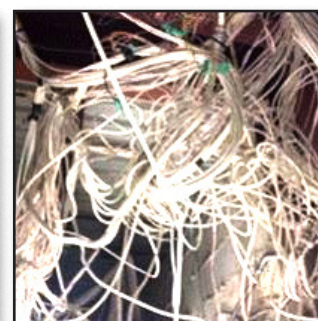
- Structured Cabling Installation
- Fiber Optic Installation for both Indoors and Outdoors
- Modifications and Upgrades to Fiber and Copper Solutions
- Wi-Fi Studies and Installation
- Staging and Deployment in Conjunction with General Contractors and Customers



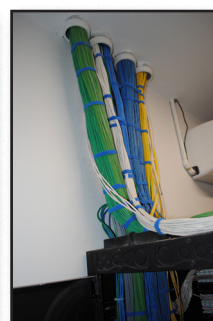
Before



After



Before



After

The Importance of Quality Project Managers

Project Managers (PM's) are a critical cog in maintaining a positive experience for clients. PM's should go through extensive training and continuing education to ensure that they are prepared, knowledgeable and up to date before beginning any work.

Define and Plan

1. The project manager must work with the client to establish exactly what needs to be accomplished in order to develop a project plan with detailed installation information.

Purchase and Allocate

2. Once the plan is in place, the project manager will determine who and what is needed to move forward and bring about a timely and successful finish. This stage includes material purchases, assigning manpower, and documenting all of it.

Participate and Coordinate

3. Truly proactive management means remaining well informed. The best PM professionals make it their business to stay abreast of what's going on throughout the entire job site so they are better able to plan and act in the client's best interest. Attending construction meetings and communicating with other contractors are part of the project manager's daily responsibilities.

Supervise and Communicate

4. Being certain that the location is prepped for installation work to begin is every bit as important as correct installation. The project manager will assess the location prior to commencing installation and will oversee daily progress all while reporting to the client on a regular basis.

Review and Evaluate

5. Once the job is completed, the project manager will ensure it complies with the original scope meets the objectives initially laid out, and will arrange for any necessary adjustments.

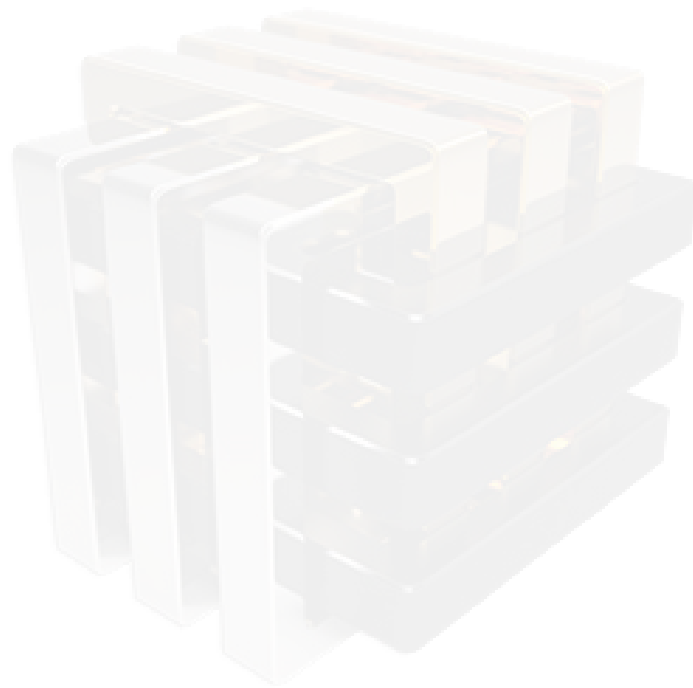


Conclusion

Clearly, there is a stringent criteria that goes into comprehensive structured cabling. Selecting a quality integrator is imperative for a successful experience as structured cabling work is a combination of strong attention to detail and experience in work. The difference in a quality job and a cabling disaster comes down to the fine details and nuances of the integrator. Are the project managers present and involved in each stage of the project? Are they in tune with the nuances of your vertical market? Do they have examples of past work? These are simple indicators to pre screen an integrator for structured cabling.

Sources:

1. Coker, Connie Jo. "Translucent Newtorks Introduction ." 29 Sept. 2017.
2. Rhodes, Brian. "Cabling Best Practices Guide." IPVM, 3 Jan. 2018, ipvm.com/reports/avoiding-cabling-nightmares.



AISG NY HQ
College Point, NY 11356

AISG - FL Office
West Palm Beach, FL 33411

AISG - OH Office
Cleveland, OH 44109

AISG - CA Office
Monterey Park, CA 91754

AISG - TX Office
Tyler, TX 75708

Toll Free - 877-496-8145 | NYC - 718-576-1471 | FAX - 718-785-3213 | E-mail - info@aisg-online.com